

Legend:

- Norfolk Boreas red line boundary
- Non-designated Heritage Assets study area
- Norfolk Boreas Onshore Project Infrastructure (Scenario 1 & 2)**
 - Landfall zone
 - Landfall compound zone
 - Indicative landfall compound
 - Onshore cable route
 - Construction access
 - Operational access
 - Mobilisation zone
 - Indicative mobilisation area compound
- Historic landscape character - broad type¹**
 - 18th-19th century enclosure
 - 20th century agriculture
 - Built up areas - historic
 - Built up areas - modern
 - Coastal - managed wetland
 - Commons, wastes, heaths
 - Horticulture
 - Inland - drained enclosure
 - Inland - managed wetland
 - Parks, gardens, recreation
 - Woodland

¹Norfolk County Council, 2017.

Project: Norfolk Boreas	Report: Environmental Statement
----------------------------	------------------------------------

Title:
Historic landscape characterisation
(Map 1 of 9)

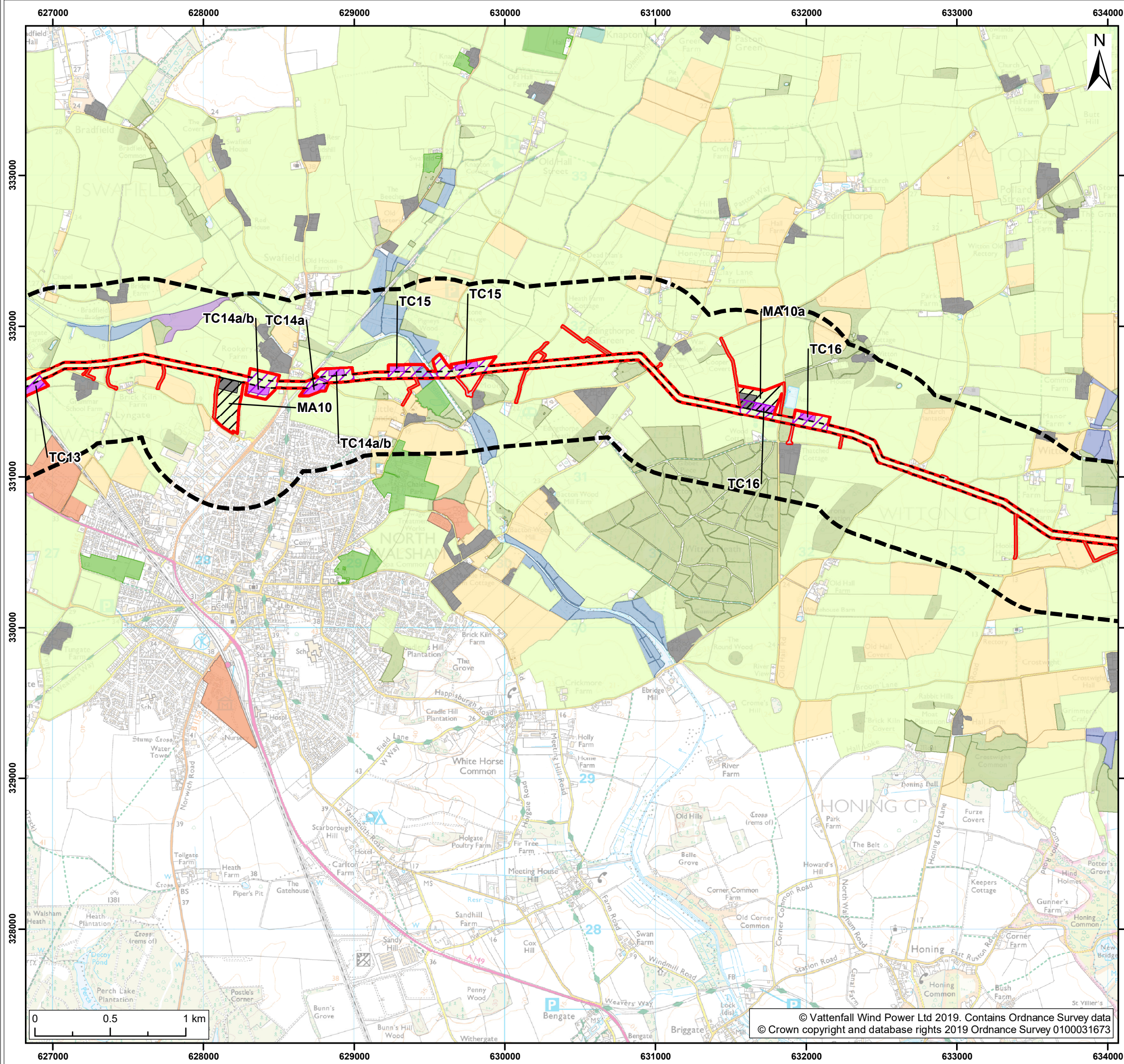
Figure: 28.3a		Drawing No: PB5640-006-028-003a			
Revision:	Date:	Drawn:	Checked:	Size:	Scale:
01	27/02/2019	JT	CD	A3	1:25,000

Co-ordinate system: British National Grid EPSG: 27700

VATTENFALL

Royal HaskoningDHV
Enhancing Society Together

© Vattenfall Wind Power Ltd 2019. Contains Ordnance Survey data
© Crown copyright and database rights 2019 Ordnance Survey 0100031673



Legend:

- Norfolk Boreas red line boundary
- Non-designated Heritage Assets study area
- Norfolk Boreas Onshore Project Infrastructure (Scenario 1 & 2)**
- Onshore cable route
- Construction access
- Operational access
- Trenchless crossing zone (e.g. HDD)
- Indicative trenchless crossing compound
- Mobilisation zone
- Indicative mobilisation area compound

Historic landscape character - broad type¹

- 18th-19th century enclosure
- 20th century agriculture
- Built up areas - historic
- Built up areas - modern
- Commons, wastes, heaths
- Horticulture
- Industry
- Inland - drained enclosure
- Inland - managed wetland
- Marginal
- Parks, gardens, recreation
- Water features
- Woodland

¹Norfolk County Council, 2017.

Project: Norfolk Boreas	Report: Environmental Statement
-----------------------------------	---

Title:
Historic landscape characterisation
(Map 2 of 9)

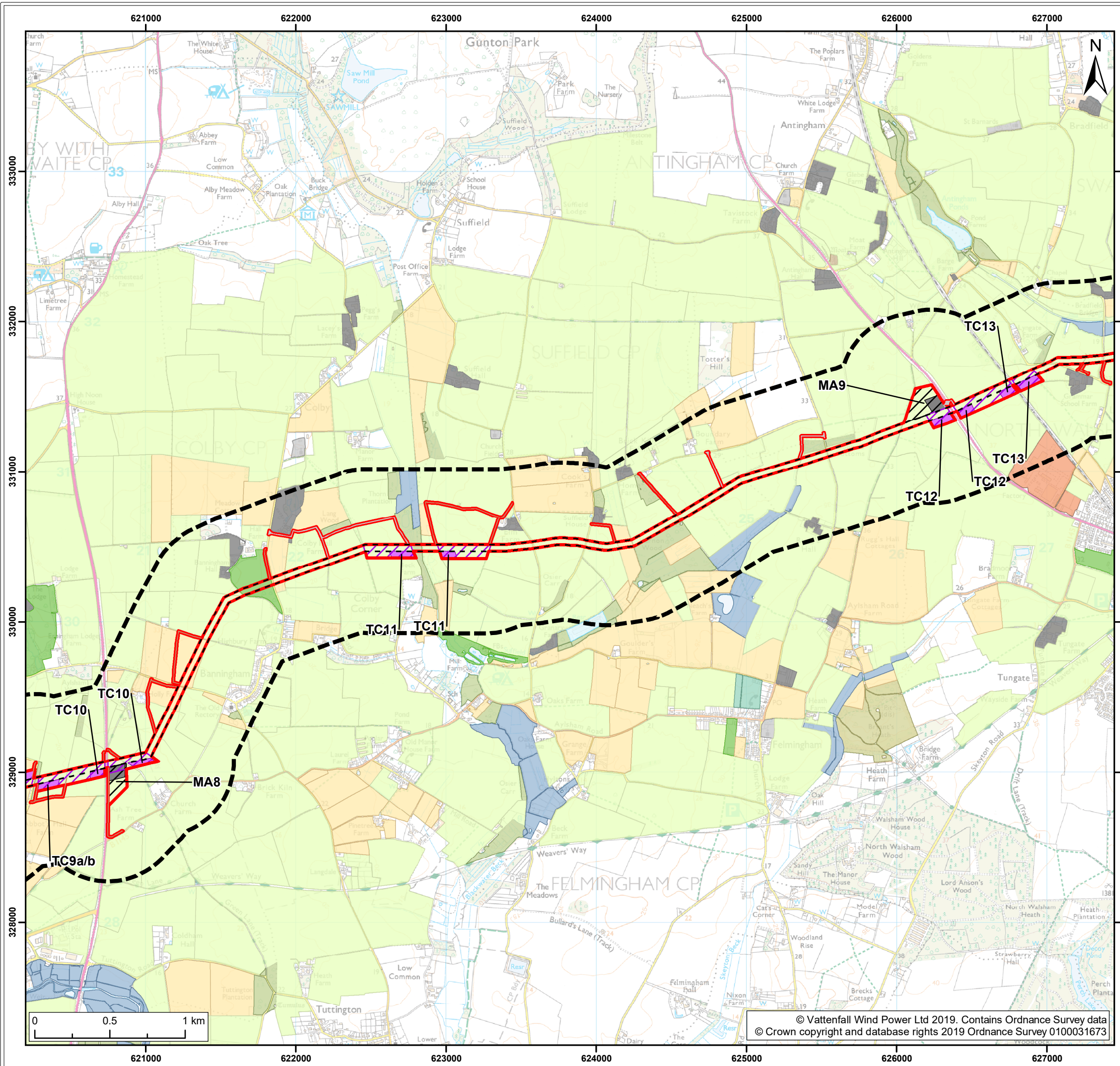
Figure: 28.3a		Drawing No: PB5640-006-028-003a			
Revision:	Date:	Drawn:	Checked:	Size:	Scale:
01	27/02/2019	JT	CD	A3	1:25,000

Co-ordinate system: British National Grid **EPSG:** 27700

VATTENFALL

Royal HaskoningDHV
Enhancing Society Together

© Vattenfall Wind Power Ltd 2019. Contains Ordnance Survey data
© Crown copyright and database rights 2019 Ordnance Survey 0100031673



Legend:

- Norfolk Boreas red line boundary
- Non-designated Heritage Assets study area
- Norfolk Boreas Onshore Project Infrastructure (Scenario 1 & 2)**
 - Onshore cable route
 - Construction access
 - Operational access
 - Trenchless crossing zone (e.g. HDD)
 - Indicative trenchless crossing compound
 - Mobilisation zone
 - Indicative mobilisation area compound
- Historic landscape character - broad type¹**
 - 18th-19th century enclosure
 - 20th century agriculture
 - Built up areas - historic
 - Built up areas - modern
 - Commons, wastes, heaths
 - Historic earthwork
 - Horticulture
 - Industry
 - Inland - managed wetland
 - Parks, gardens, recreation
 - Water features
 - Woodland

¹Norfolk County Council, 2017.

Project:	Report:
Norfolk Boreas	Environmental Statement

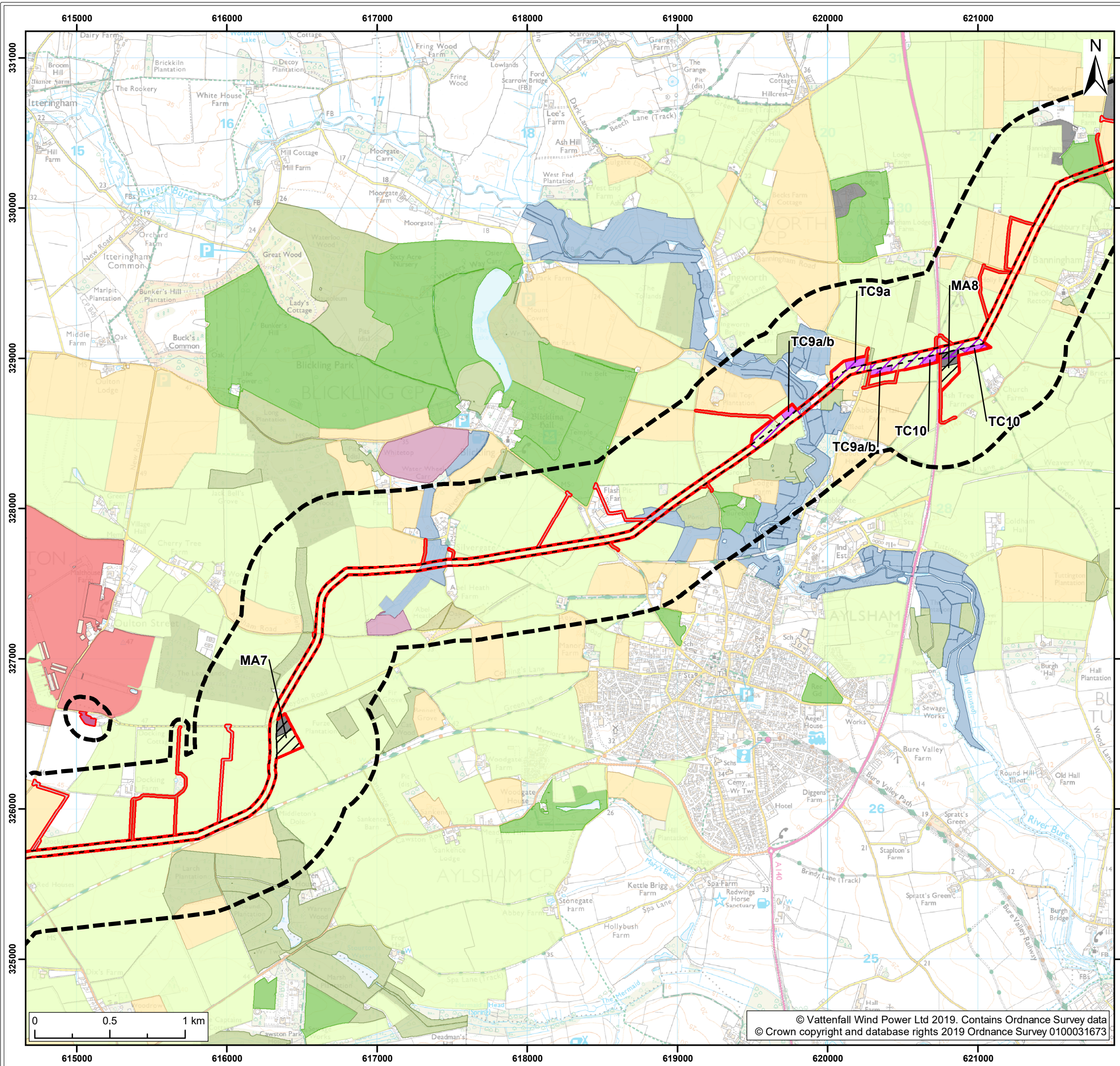
Title:
Historic landscape characterisation
(Map 3 of 9)

Figure: 28.3a	Drawing No: PB5640-006-028-003a				
Revision:	Date:	Drawn:	Checked:	Size:	Scale:
01	27/02/2019	JT	CD	A3	1:25,000

Co-ordinate system: British National Grid EPSG: 27700

VATTENFALL **Royal HaskoningDHV**
Enhancing Society Together

© Vattenfall Wind Power Ltd 2019. Contains Ordnance Survey data
© Crown copyright and database rights 2019 Ordnance Survey 0100031673



Legend:

- Norfolk Boreas red line boundary
- Non-designated Heritage Assets study area
- Onshore cable route
- Cable logistics area
- Construction access
- Operational access
- Trenchless crossing zone (e.g. HDD)
- Indicative trenchless crossing compound
- Mobilisation zone
- Indicative mobilisation area compound
- Historic landscape character - broad type¹**
- 18th-19th century enclosure
- 20th century agriculture
- Built up areas - modern
- Commons, wastes, heaths
- Inland - managed wetland
- Military
- Parks, gardens, recreation
- Pre-18th century enclosure
- Water features
- Woodland

¹Norfolk County Council, 2017.

Project: Norfolk Boreas	Report: Environmental Statement
-----------------------------------	---

Title:
Historic landscape characterisation (Map 4 of 9)

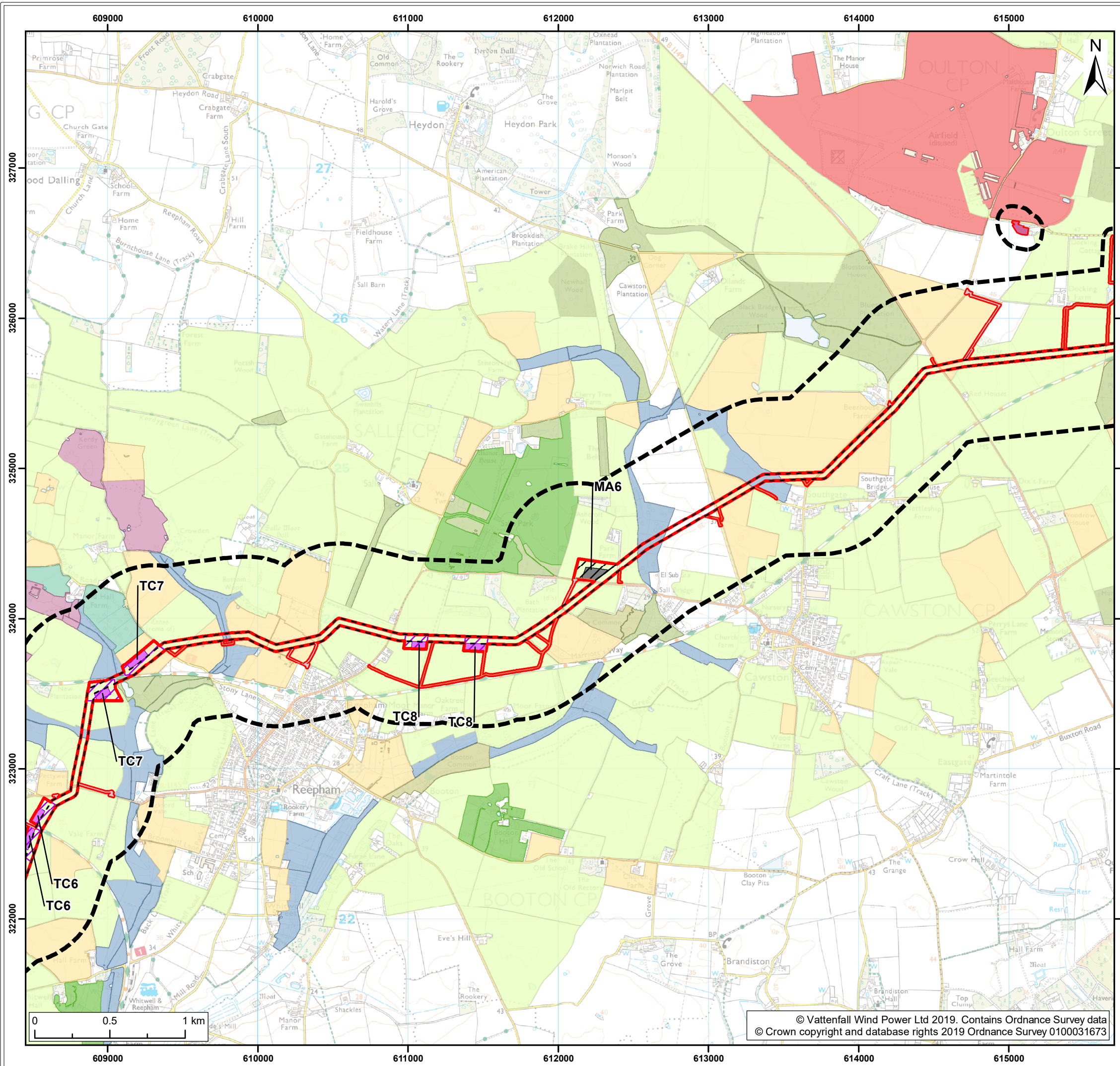
Figure: 28.3a	Drawing No: PB5640-006-028-003a				
Revision:	Date:	Drawn:	Checked:	Size:	Scale:
01	27/02/2019	JT	CD	A3	1:25,000

Co-ordinate system: British National Grid **EPSG:** 27700

VATTENFALL

Royal HaskoningDHV
Enhancing Society Together

© Vattenfall Wind Power Ltd 2019. Contains Ordnance Survey data
© Crown copyright and database rights 2019 Ordnance Survey 0100031673



Legend:

- Norfolk Boreas red line boundary
- Non-designated Heritage Assets study area
- Onshore cable route
- Cable logistics area
- Construction access
- Operational access
- Trenchless crossing zone (e.g. HDD)
- Indicative trenchless crossing compound
- Mobilisation zone
- Indicative mobilisation area compound
- Historic landscape character - broad type¹**
- 18th-19th century enclosure
- 20th century agriculture
- Commons, wastes, heaths
- Horticulture
- Inland - managed wetland
- Military
- Parks, gardens, recreation
- Pre-18th century enclosure
- Woodland

¹Norfolk County Council, 2017.

Project:	Report:
Norfolk Boreas	Environmental Statement

Title:

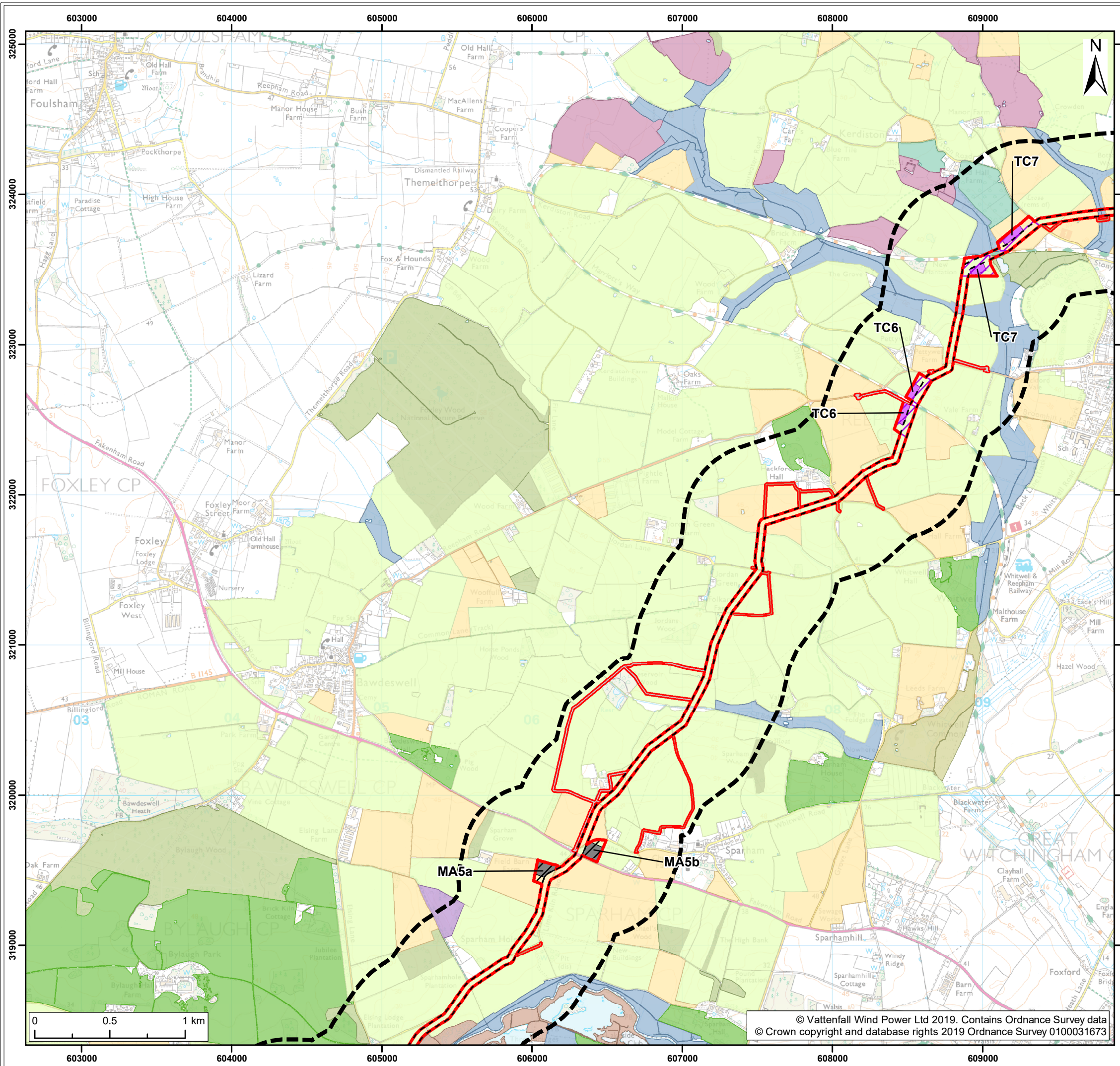
Historic landscape characterisation
(Map 5 of 9)

Figure: 28.3a		Drawing No: PB5640-006-028-003a			
Revision:	Date:	Drawn:	Checked:	Size:	Scale:
01	27/02/2019	JT	CD	A3	1:25,000

Co-ordinate system: British National Grid EPSG: 27700

VATTENFALL

Royal HaskoningDHV
Enhancing Society Together



Legend:

- Norfolk Boreas red line boundary
- Non-designated Heritage Assets study area
- Onshore cable route
- Construction access
- Operational access
- Trenchless crossing zone (e.g. HDD)
- Indicative trenchless crossing compound
- Mobilisation zone
- Indicative mobilisation area compound

Norfolk Boreas Onshore Project Infrastructure (Scenario 1 & 2)

Norfolk Boreas Onshore Project Infrastructure (Scenario 2)

Historic landscape character - broad type¹

- 18th-19th century enclosure
- 20th century agriculture
- Commons, wastes, heaths
- Horticulture
- Inland - managed wetland
- Marginal
- Mineral
- Parks, gardens, recreation
- Pre-18th century enclosure
- Water features
- Woodland

¹Norfolk County Council, 2017.

Project:	Report:
Norfolk Boreas	Environmental Statement

Title:

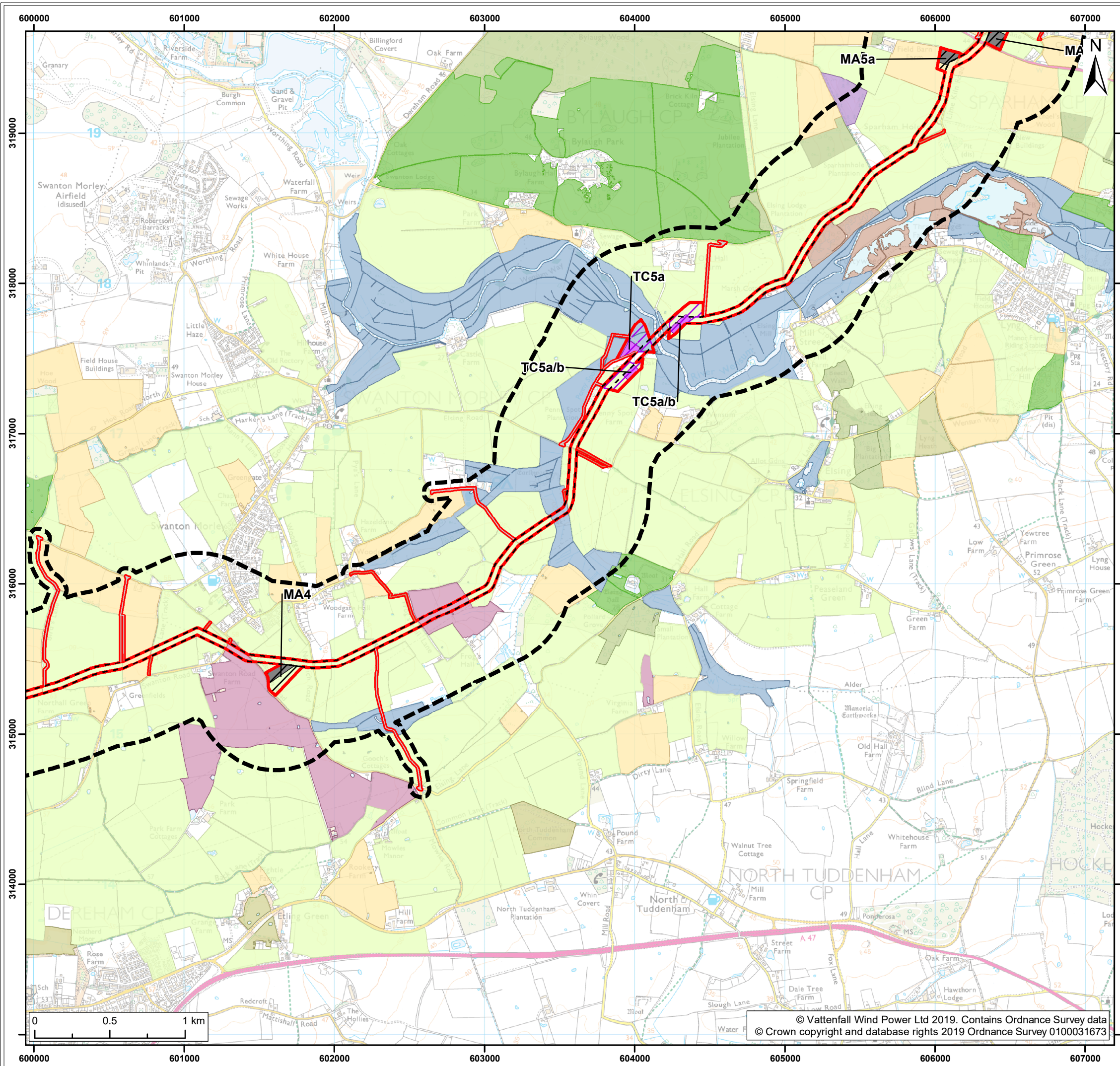
Historic landscape characterisation
(Map 6 of 9)

Figure: 28.3a		Drawing No: PB5640-006-028-003a			
Revision:	Date:	Drawn:	Checked:	Size:	Scale:
01	27/02/2019	JT	CD	A3	1:25,000

Co-ordinate system: British National Grid EPSG: 27700

VATTENFALL

Royal HaskoningDHV
Enhancing Society Together



Legend:

- Norfolk Boreas red line boundary
- Non-designated Heritage Assets study area
- Onshore cable route
- Construction access
- Operational access
- Trenchless crossing zone (e.g. HDD)
- Indicative trenchless crossing compound
- Mobilisation zone
- Indicative mobilisation area compound

Norfolk Boreas Onshore Project Infrastructure (Scenario 1 & 2)

- Onshore cable route
- Construction access
- Operational access
- Trenchless crossing zone (e.g. HDD)
- Indicative trenchless crossing compound
- Mobilisation zone
- Indicative mobilisation area compound

Historic landscape character - broad type¹

- 18th-19th century enclosure
- 20th century agriculture
- Commons, wastes, heaths
- Inland - managed wetland
- Marginal
- Mineral
- Parks, gardens, recreation
- Pre-18th century enclosure
- Water features
- Woodland

¹Norfolk County Council, 2017.

Project: Norfolk Boreas	Report: Environmental Statement
-----------------------------------	---

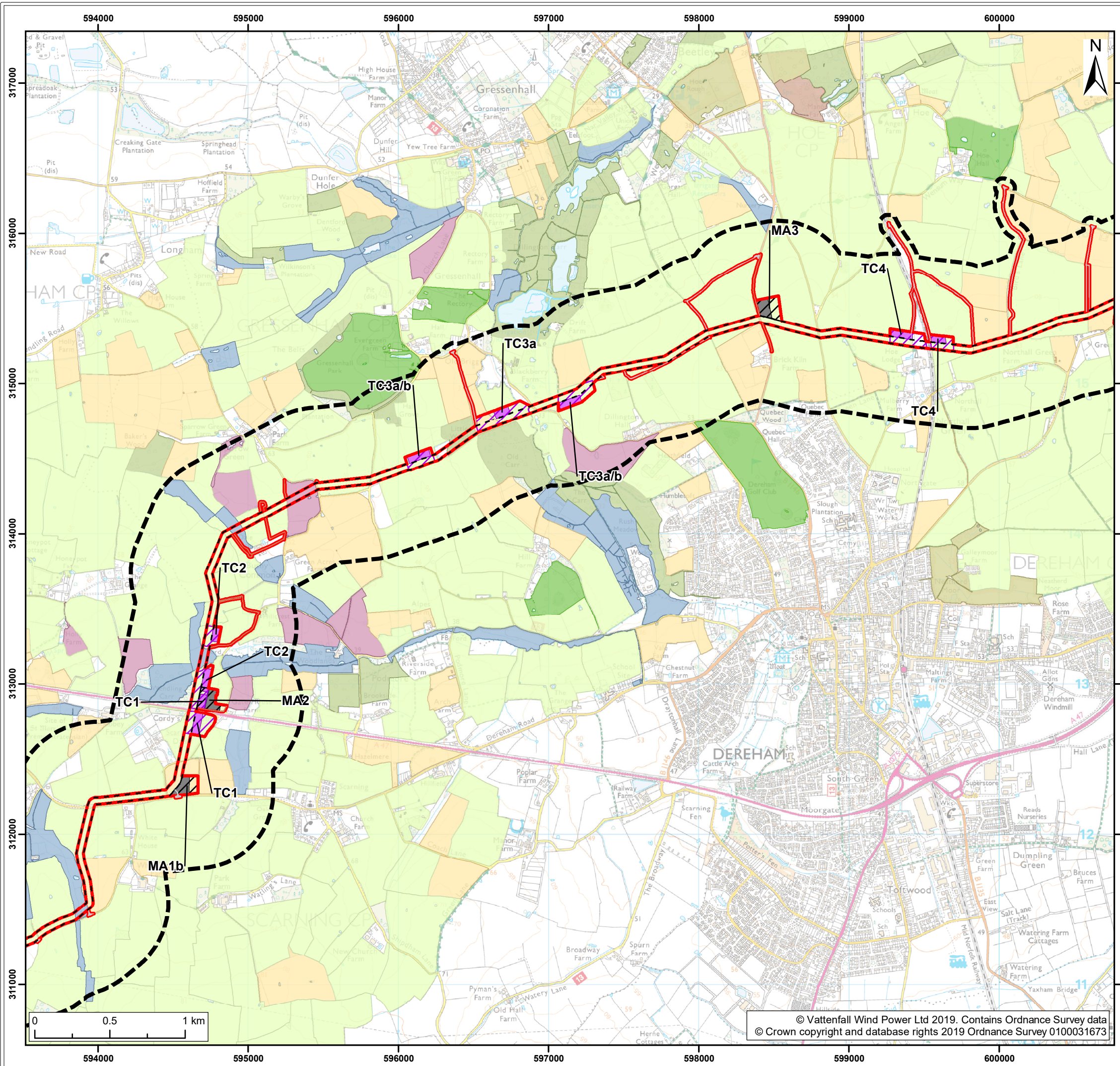
Title:
Historic landscape characterisation
(Map 7 of 9)

Figure: 28.3a		Drawing No: PB5640-006-028-003a			
Revision:	Date:	Drawn:	Checked:	Size:	Scale:
01	27/02/2019	JT	CD	A3	1:25,000

Co-ordinate system: British National Grid **EPSG:** 27700

VATTENFALL

Royal HaskoningDHV
Enhancing Society Together



Legend:

- Norfolk Boreas red line boundary
- Non-designated Heritage Assets study area
- Onshore cable route
- Construction access
- Operational access
- Trenchless crossing zone (e.g. HDD)
- Indicative trenchless crossing compound
- Mobilisation zone
- Indicative mobilisation area compound
- Historic landscape character - broad type¹**
- 18th-19th century enclosure
- 20th century agriculture
- Commons, wastes, heaths
- Inland - managed wetland
- Mineral
- Parks, gardens, recreation
- Pre-18th century enclosure
- Water features
- Woodland

¹Norfolk County Council, 2017.

Project: Norfolk Boreas	Report: Environmental Statement
-----------------------------------	---

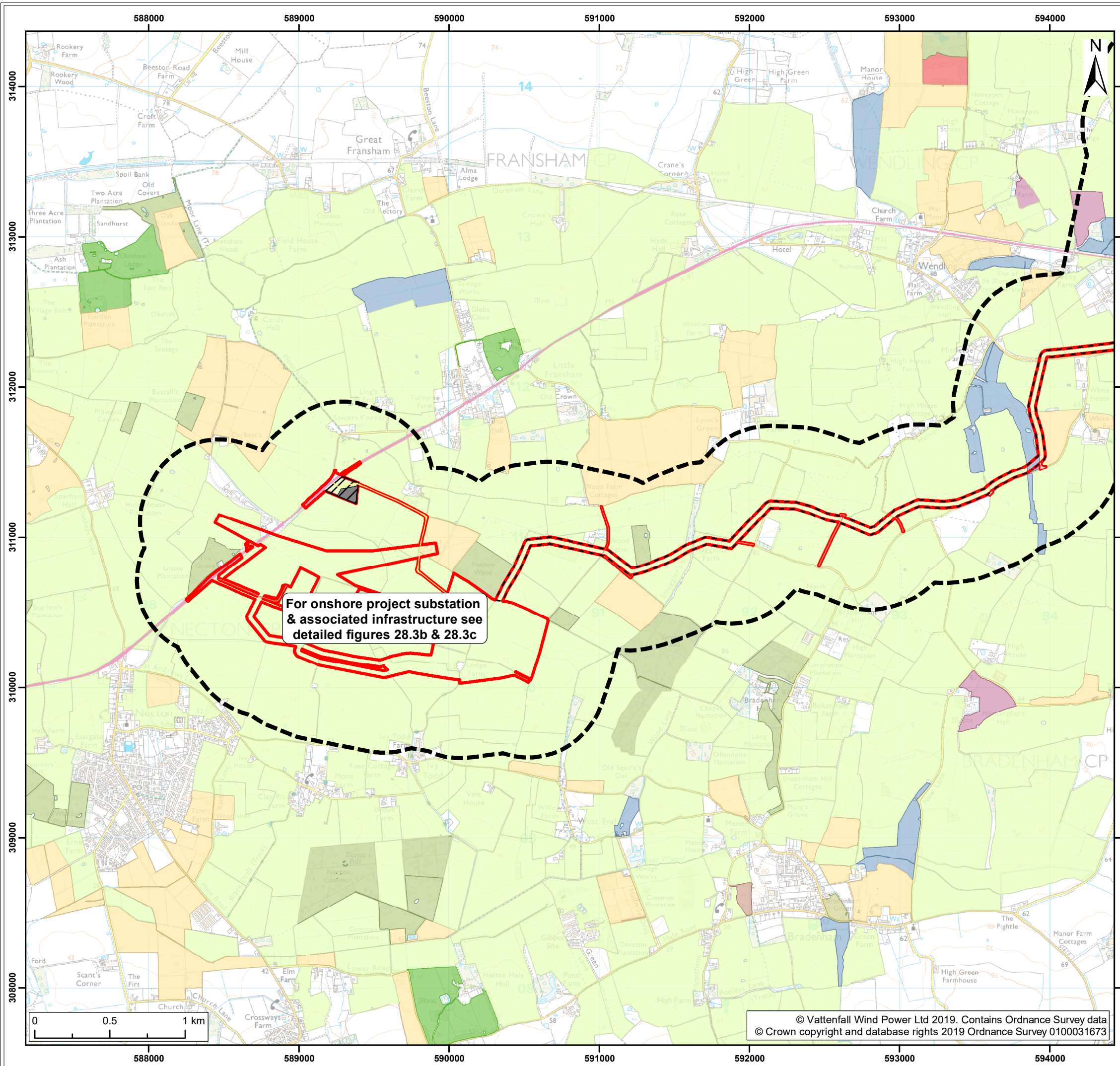
Title:
Historic landscape characterisation (Map 8 of 9)

Figure: 28.3a	Drawing No: PB5640-006-028-003a				
Revision:	Date:	Drawn:	Checked:	Size:	Scale:
01	27/02/2019	JT	CD	A3	1:25,000

Co-ordinate system: British National Grid EPSG: 27700

VATTENFALL

Royal HaskoningDHV
Enhancing Society Together



Legend:

- Norfolk Boreas red line boundary
- Non-designated Heritage Assets study area
- Norfolk Boreas Onshore Project Infrastructure (Scenario 1 & 2)
- Onshore cable route
- Mobilisation zone
- Indicative mobilisation area compound
- Construction access
- Operational access
- Permanent access

Historic landscape character - broad type¹

- 18th-19th century enclosure
- 20th century agriculture
- Commons, wastes, heaths
- Inland - managed wetland
- Military
- Mineral
- Parks, gardens, recreation
- Pre-18th century enclosure
- Woodland

¹Norfolk County Council, 2017.

Project: Norfolk Boreas	Report: Environmental Statement
----------------------------	------------------------------------

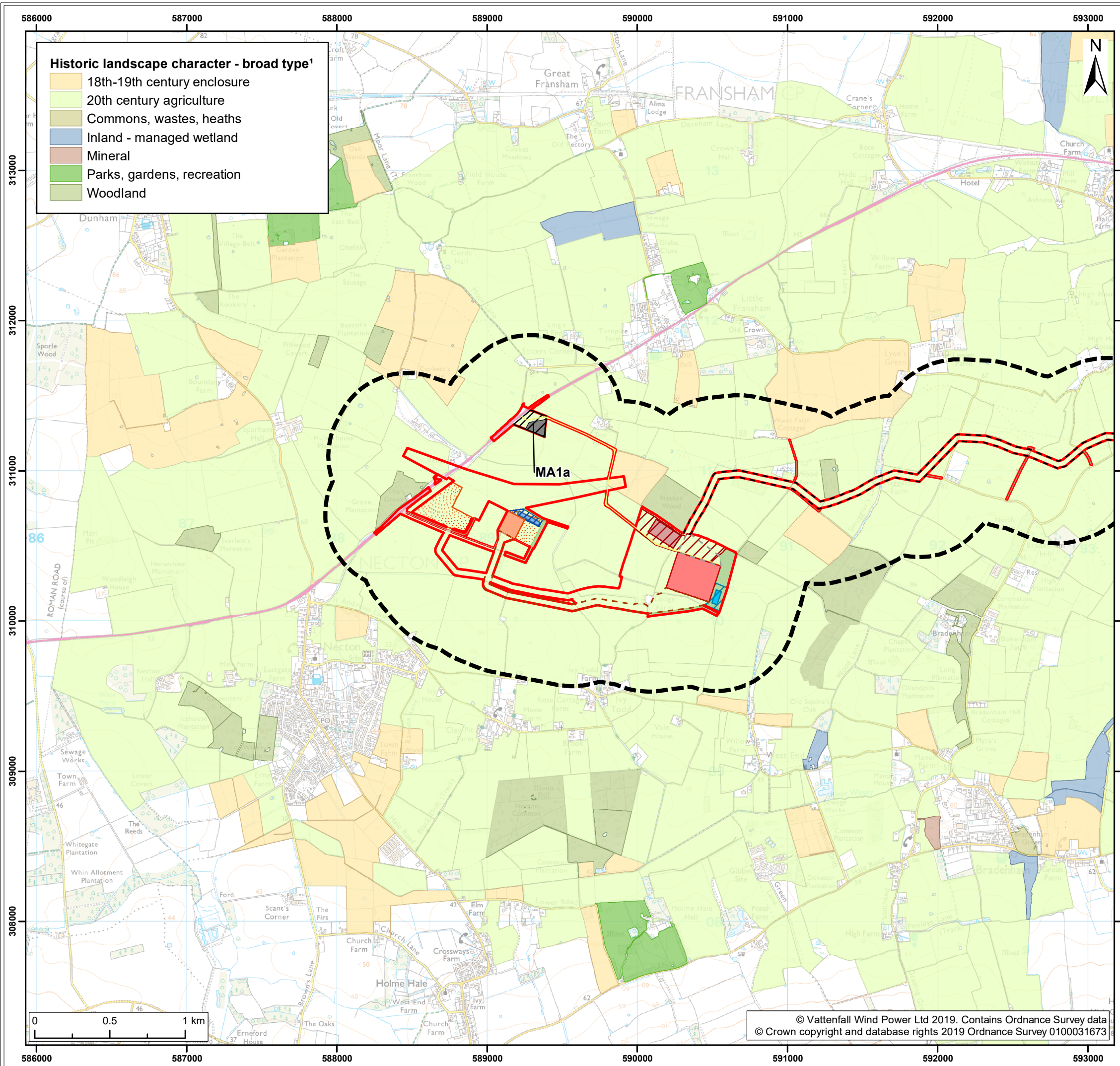
Title:
Historic landscape characterisation
(Map 9 of 9)

Figure: 28.3a		Drawing No: PB5640-006-028-003a			
Revision:	Date:	Drawn:	Checked:	Size:	Scale:
01	27/02/2019	JT	CD	A3	1:25,000

Co-ordinate system: British National Grid EPSG: 27700

VATTENFALL

Royal HaskoningDHV
Enhancing Society Together



Legend:

- Norfolk Boreas red line boundary
- Non-designated Heritage Assets study area
- Norfolk Boreas Onshore Project Infrastructure (Scenario 1)**
- Onshore cable route
- Cable route entry to substation
- Onshore 400kV cable route
- Mobilisation zone
- Indicative mobilisation area compound
- Construction access
- Operational access
- Permanent access
- Onshore project substation
- Onshore project substation temporary construction compound zone
- Indicative onshore project substation temporary construction compound
- Attenuation pond zone
- Indicative attenuation pond
- Indicative mitigation planting
- National Grid substation extension
- National Grid temporary works
- National Grid attenuation pond location search area
- Indicative National Grid attenuation pond

*Norfolk County Council, 2017.

Project:	Report:
Norfolk Boreas	Environmental Statement

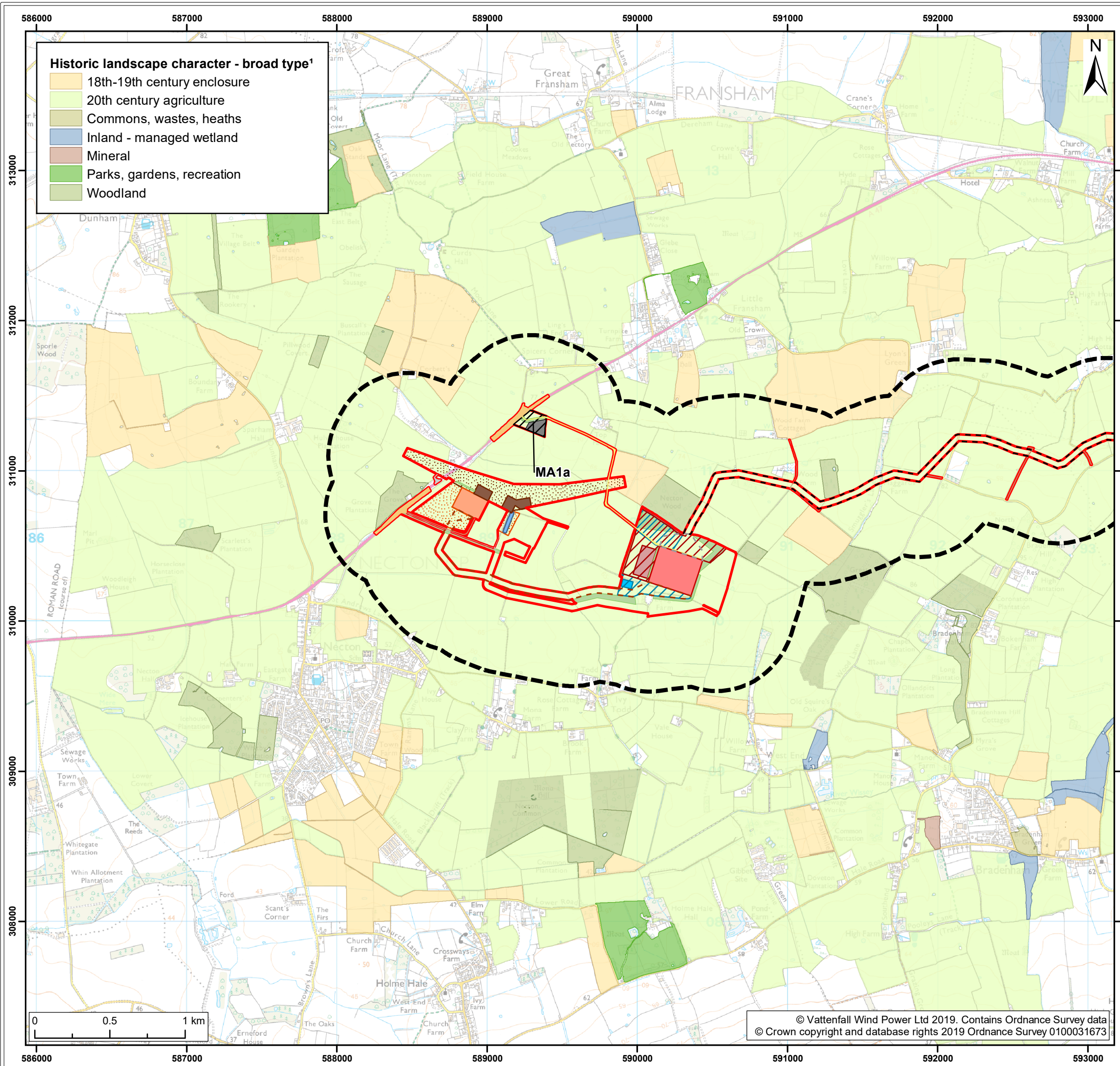
Title:
Historic landscape characterisation

Figure: 28.3b	Drawing No: PB5640-006-028-003b				
Revision:	Date:	Drawn:	Checked:	Size:	Scale:
01	27/02/2019	JT	CD	A3	1:25,000

Co-ordinate system: British National Grid EPSG: 27700

VATTENFALL

Royal HaskoningDHV
Enhancing Society Together



Legend:

Norfolk Boreas red line boundary	Onshore project substation temporary construction compound zone
Non-designated Heritage Assets study area	Indicative onshore project substation temporary construction compound
Norfolk Boreas Onshore Project Infrastructure (Scenario 2)	Attenuation pond zone
Onshore cable route	Indicative attenuation pond
Cable route entry to substation	Indicative mitigation planting
Onshore 400kV cable route	National Grid substation extension
Mobilisation zone	National Grid new / replacement OHL tower search area
Indicative mobilisation area compound	National Grid temporary works
Highways temporary works area	Overhead line temporary works
Construction access	National Grid attenuation pond
Operational access	
Permanent access	
Onshore project substation	

*Norfolk County Council, 2017.

Project: Norfolk Boreas	Report: Environmental Statement
----------------------------	------------------------------------

Title:
Historic landscape characterisation

Figure: 28.3c	Drawing No: PB5640-006-028-003c				
Revision:	Date:	Drawn:	Checked:	Size:	Scale:
01	27/02/2019	JT	CD	A3	1:25,000

Co-ordinate system: British National Grid EPSG: 27700

VATTENFALL **Royal HaskoningDHV**
Enhancing Society Together